
UPGRADE INSTRUCTIONS

E Series version 02.03

Applies to the following projectors: DHD675-E, DWU675-E, DHD775-E and DWU775-E

Upgrade Summary:

1. The update package contains 3 files:
 - Christie ESeries C02.03 FW LAN Update Wizard.msi
 - 20130719_PWC808_B2231_x32_128M.zip
 - 20130719_PWC808_B2231_x64_128M.zip
2. Steps for upgrading are:
 - Install the FW wizard.
 - With USB connection, upgrade WebUI/networking FW version **B22.31**
 - With RJ45/network connection and using the wizards:
 - Upgrade main projector scaler FW version **C02.03**
 - Upgrade PIC code version **A29.06**
3. Two cables are required for the upgrade:
 - LAN cable (RJ45)
 - USB cable (USB to Mini-USB)
4. It is recommended to use a computer/laptop with **Windows XP/ Window 7, Internet Explorer 7 and higher**, with automatic screensavers and screen timeouts disabled.



Stage 1 – Install Update files and prepare computer

5. Determine whether your computer is running a 32-bit or 64-bit version of Windows.
(<http://support.microsoft.com/kb/827218#method2> for help)
6. Unzip the relevant files onto your computer:
 - For 32-bit operating systems use x32: 20130719_PWC808_B2231_x32_128M.zip
 - For 64-bit operating systems use x64: 20130719_PWC808_B2231_x64_128M.zip
7. Install the C02.03 wizard on your computer. This will install 2 icons on your desktop:
 - "Christie ESeries C02.03 System FW LAN Update Wizard"
 - "Christie ESeries A29.06 PIC FW LAN Update Wizard"



Stage 2 – Upgrade WebUI to version B22.31

****NOTE:** This upgrade must be done first, before the Main FW upgrade.
A USB to Mini-USB connection is required between the computer and projector.

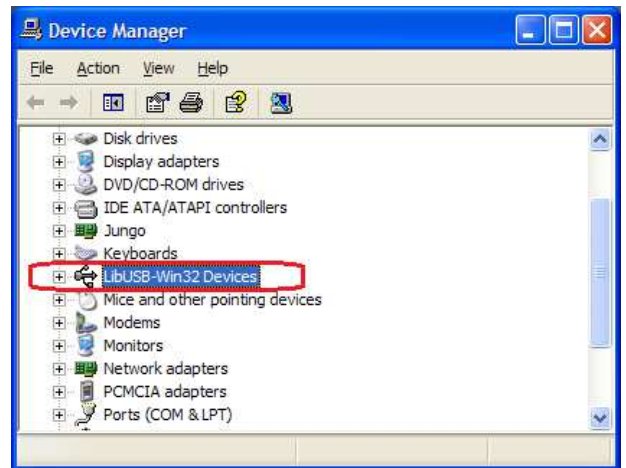
Put projector into programming mode

8. **Unplug the power cable, and then plug in.**
Ensure the projector is in standby mode (The 4 status LEDs are off).

- ** If the projector is powered on automatically, turn off “AC Power On” by using the projector Main Menu -> Configuration -> Power Management -> **AC Power On**. Then repeat step 8.
- 9. Put the projector into flash upgrade mode by holding the “UP” key on the built-in keypad and then press and hold the power button (at the same time as “UP”) until the 4 status LEDs begin to flash green and red alternately (hold for approximately 6 seconds).
- 10. Connect the USB cable between the computer and projector.

Install USB driver on computer

- 11. Install the USB driver from the file in step 6 (This step only needs to be completed successfully one time unless you change USB ports)
 - Make sure that you have administrative privileges on your PC.
 - Open your Device Manager. To do this manually:
 - o Hold the windows key and press R
 - o Type “mmc -open \WINDOWS\system32\devmgmt.msc” without the quotations and run
 - In Device Manager, look for and expand the USB device. (Need active connection to projector to see this). It may show as “USB Device”, “Unknown Device” or “Other devices”.
 - Right click on the correct one and choose “Update Driver...” Browse and select the driver file from the directory in which you unzipped the files in step 6.
e.g.
C:\Christie\20130719_PWC808_B2231_x32_128M_User\FlashUpgrader_x32_driver.
If you are running a 64-bit operating system, choose the file from the “FlashUpgrader_x64_driver” folder.
 - Allow the installation to complete then press finish.
 - After the installation, ensure “LibUSB-Win32 Devices” is shown in Device Manager.



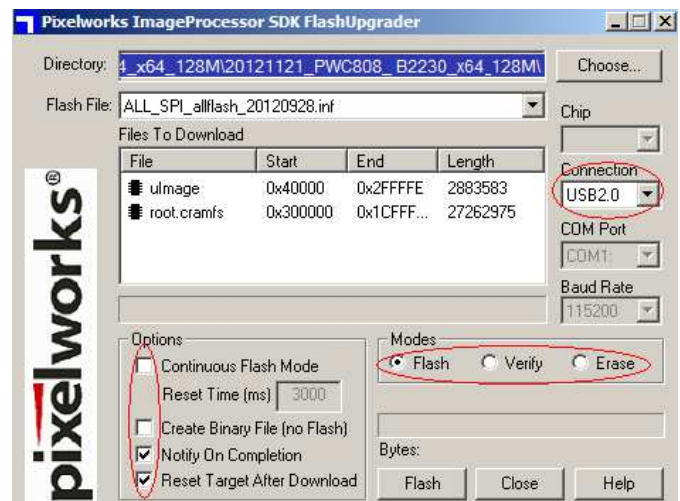
Upgrade the firmware

- 12. In the Folder extracted in step 6, run the correct file for your operating system:
 - **FlashUpgrader_x32.exe (for 32-bit systems) or**
 - **FlashUpgrader_x64.exe (for 64-bit systems)**

- 13. A window will appear, ensure the settings match the picture on the right.
- 14. Press flash and wait until the “Flash Complete” popup appears. After it is complete, unplug the AC power from the projector.

** If the FlashUpgrader application is stuck at “Waiting for target reset” for more than 30 seconds, try unplugging the AC power and restarting at step 8.

** Open Windows Device Manager and ensure “LibUSB-Win32 Devices” is shown properly at step 11.



Stage 3 – Set up network connection to the projector

An Ethernet connection is required between the computer and projector.

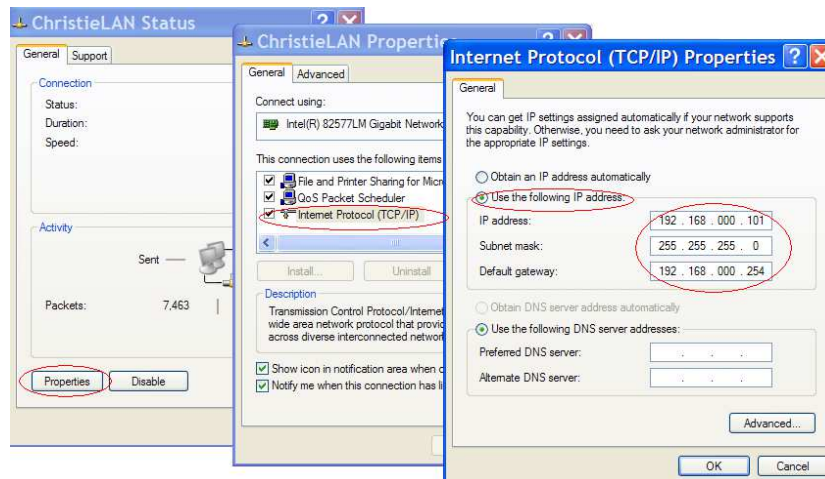
15. In the projector's menu Configuration->Communications->Network:

- Deselect DHCP (switch it off)
- Wait approximately 45 seconds for the Network Settings to take effect (i.e. until the menu settings are no longer grayed out)

Network	
1. DHCP	<input type="checkbox"/>
2. IP Address	192 . 168 . 0 . 100
3. Subnet Mask	255 . 255 . 255 . 0
4. Default Gateway	192 . 168 . 0 . 254

16. Connect the projector and the PC.

- A direct RJ45 connection is recommended.
- If the connection is through a switch or router, ensure that there are no duplicate IP addresses for any equipment connected via the switch.
- Default settings that work are: (Other settings may be used)
 - Projector IP address 192.168.0.100
 - Computer IP address 192.168.0.101
 - Subnet Mask on both 255.255.255.0



Stage 4 – Upgrade Main FW to version C02.03

The RJ45 connection (as described in Stage 3) is required between the computer and projector.

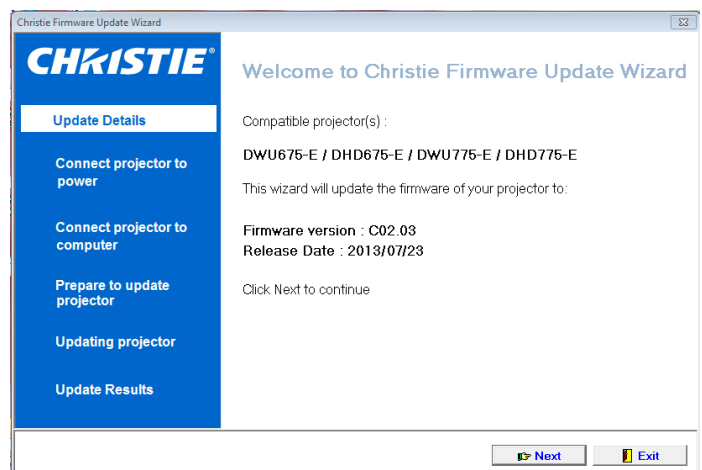
17. Start with the projector off.

18. Start the upgrade wizard from the desktop icon.

“Christie ESeries C02.03 System FW LAN Update Wizard”

19. Confirm it is the correct firmware for the projector model.

20. Turn the projector on and wait until the Source message box is displayed on the bottom left of the image.

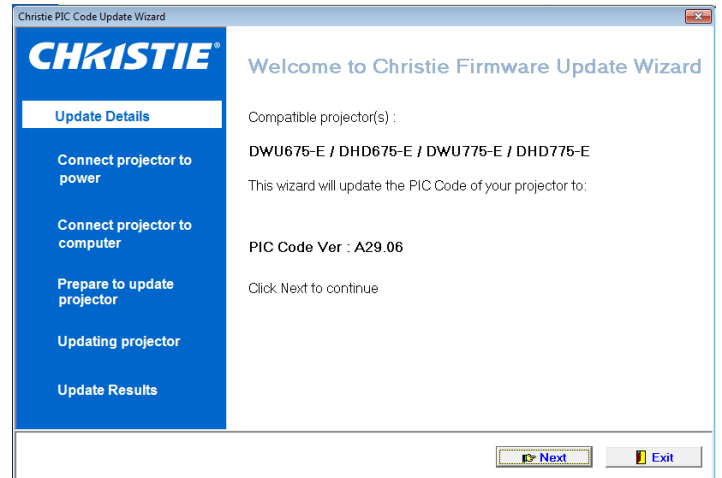


21. Follow the instructions in the Upgrade Wizard. The upgrade should take about 18 minutes.

Step 5 – Upgrade PIC FW to version A29.06

The RJ45 connection is required between the computer and projector.

22. Start the Upgrade Wizard from the desktop icon.
“Christie ESeries A29.06 PIC FW LAN Update Wizard”
23. Confirm it is the correct firmware for the projector model.
24. Turn the projector on and wait until the Source message box is displayed on the bottom left of the image.
25. Follow the instructions in the Upgrade Wizard. The upgrade should take less than a minute.



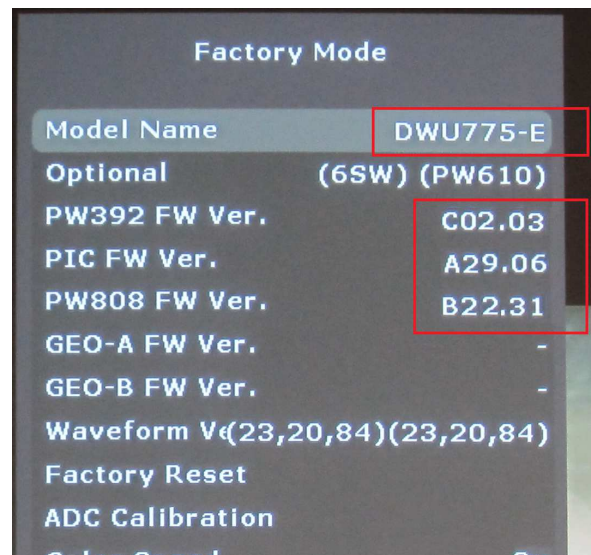
Stage 6 - Update completion & confirmation

26. After the upgrade has finished, the projector will return to Standby mode. Unplug the projector and plug it in again, then turn the projector on. The upgrade should be complete.

**** NOTE: Some projectors may require a few AC power cycles to return to normal mode. An indication that a power cycle is required is the keys on the built in keypad will all be lit and some may appear purple.**

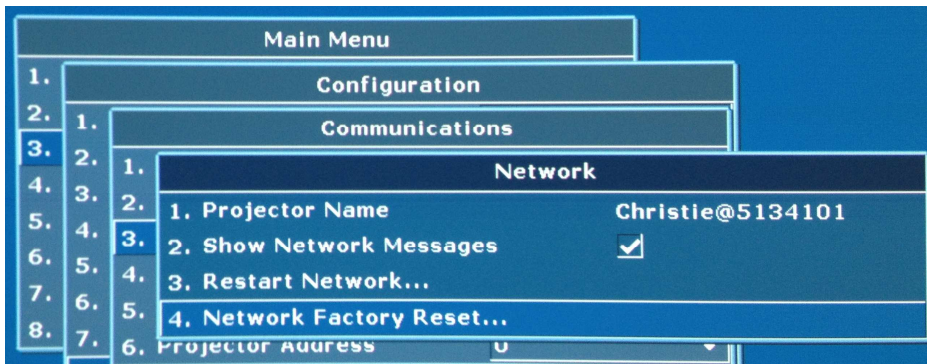
27. Go to the projector’s factory menu (on the IR remote, press “Auto”, “Left”, “Left”, “Left”) and confirm that the versions are correct and the projector model name is displayed correctly:

Model Name:	DHD675-E or DWU675-E or DHD775-E or DWU775-E (must match the model name on the projector’s label)
Main Firmware:	C02.03
PIC Firmware:	A29.06
Network Firmware:	B22.31



28. Perform a Network Factory Reset to ensure that the password changes in this version take effect.

Go to the projector Main Menu -> Configuration -> Communications -> Network -> Network Factory Reset...



Stage 7 – Christie Presenter Update

29. After completion of the upgrade, and as the projector is being operated, the presentation tool Christie Presenter version 2.2.5.0 may be downloaded directly from the projector to your computer/laptop:

- Open a web page connection to the projector
- Download Christie Presenter from the link on the main page (Log in is not required).